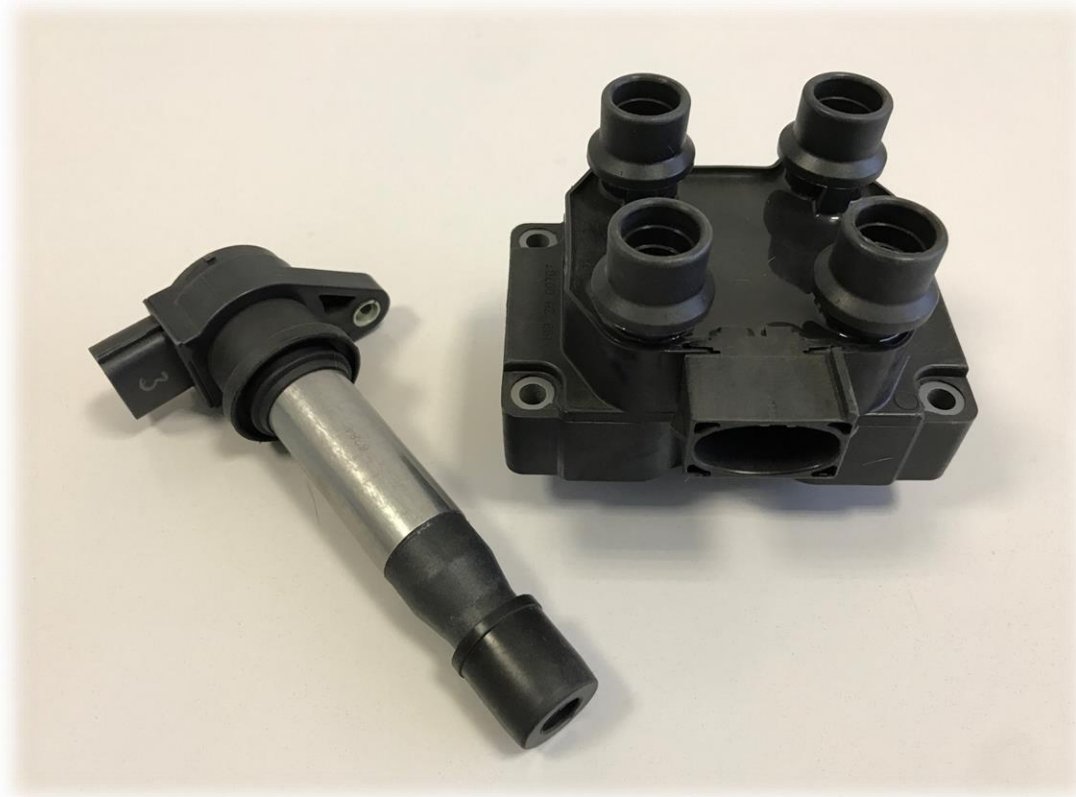


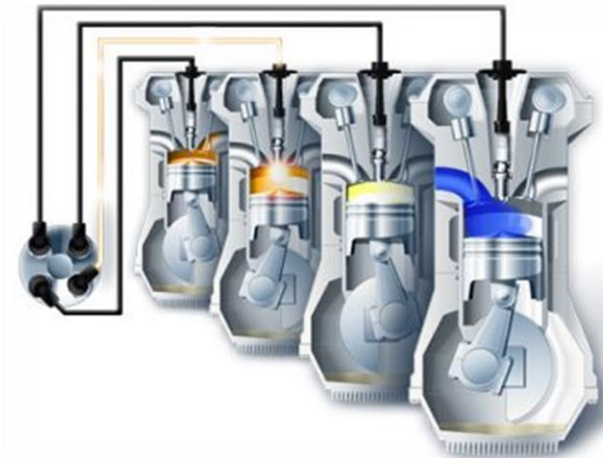


**ECB special
equipments
Application cases**

Ignition coils and electronic ignition modules



- **Target: functional and performances tests, up to 30 kV**
- **End market: AUTOMOTIVE**



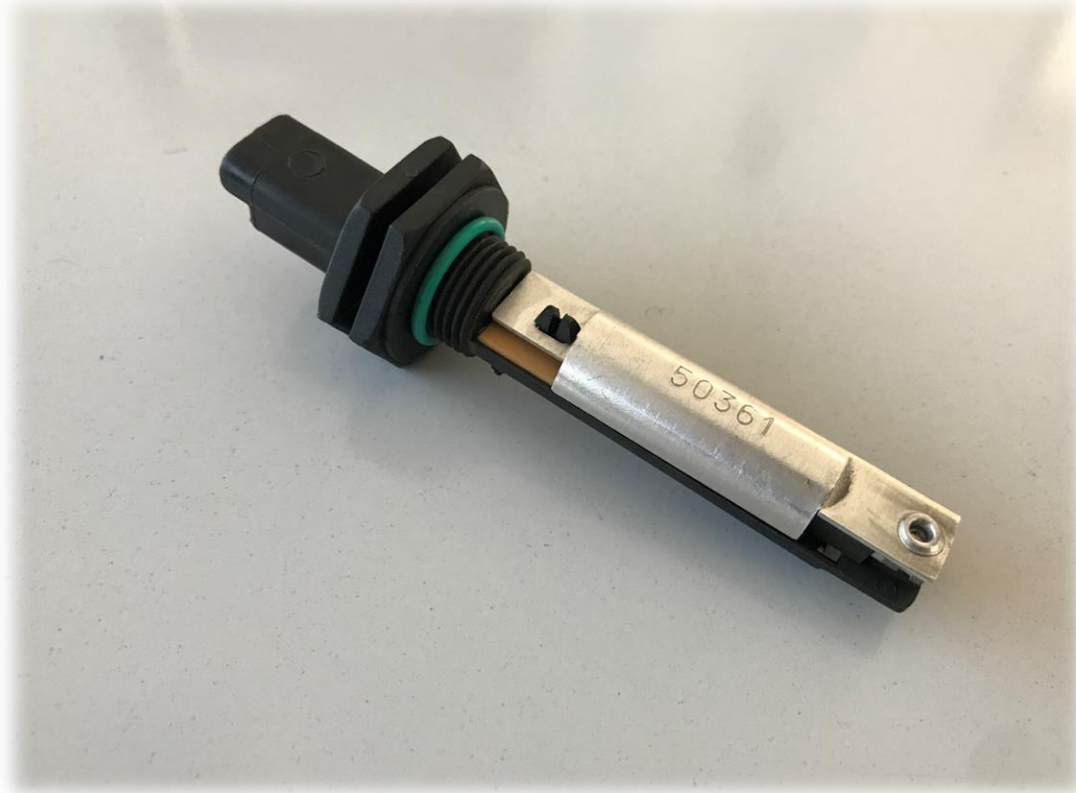
Blow by oil vapour heater



- **Target: functional test (peak and final current absorption test)**
- **End market: AUTOMOTIVE**



Diesel heater



- **Target: functional test (peak and final current absorption test)**
- **End market: AUTOMOTIVE**



Urea (AdBlue®) heating pipes



- **Target: resistance and current absorption tests**
- **End market: CONSTRUCTION EQUIPMENTS**



Diesel filter heaters and sensors



- **Target: functional test (peak and final current absorption test, water sensor check, temperature sensor check)**
- **End market: AUTOMOTIVE**



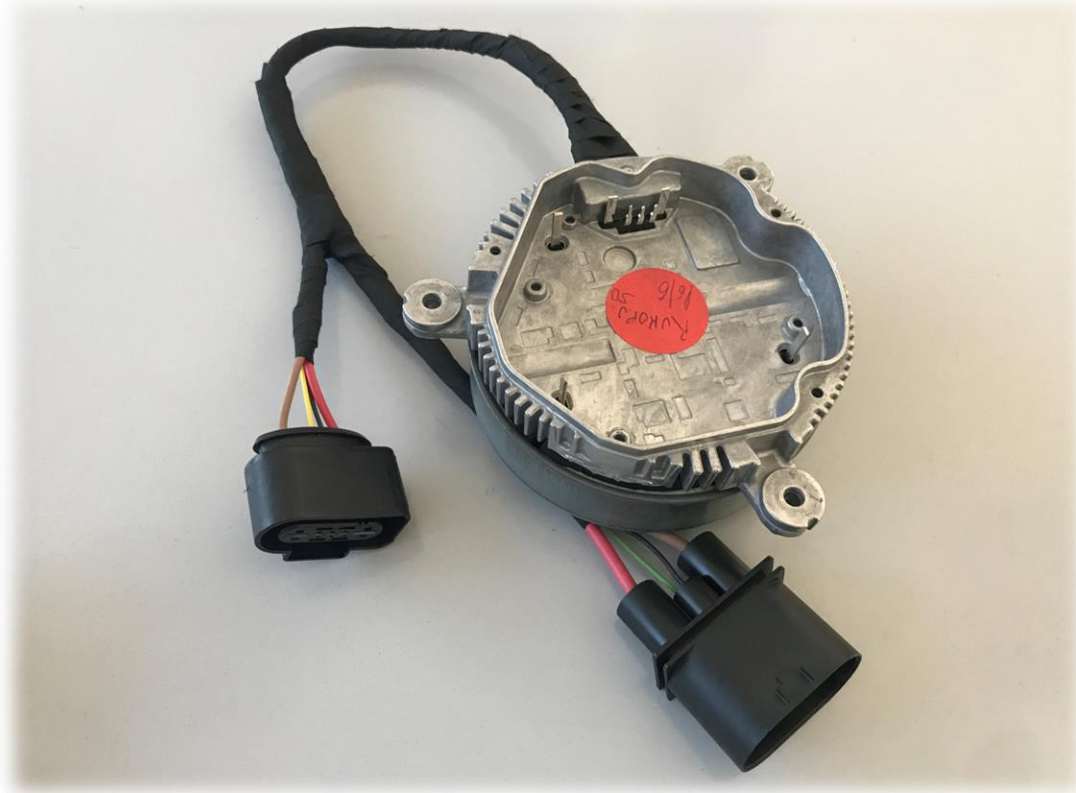
Brushless motors stators



- **Targets:**
 - **Winding resistance test**
 - **Winding insulation test**
 - **Winding surge test**
- **End market: AUTOMOTIVE**



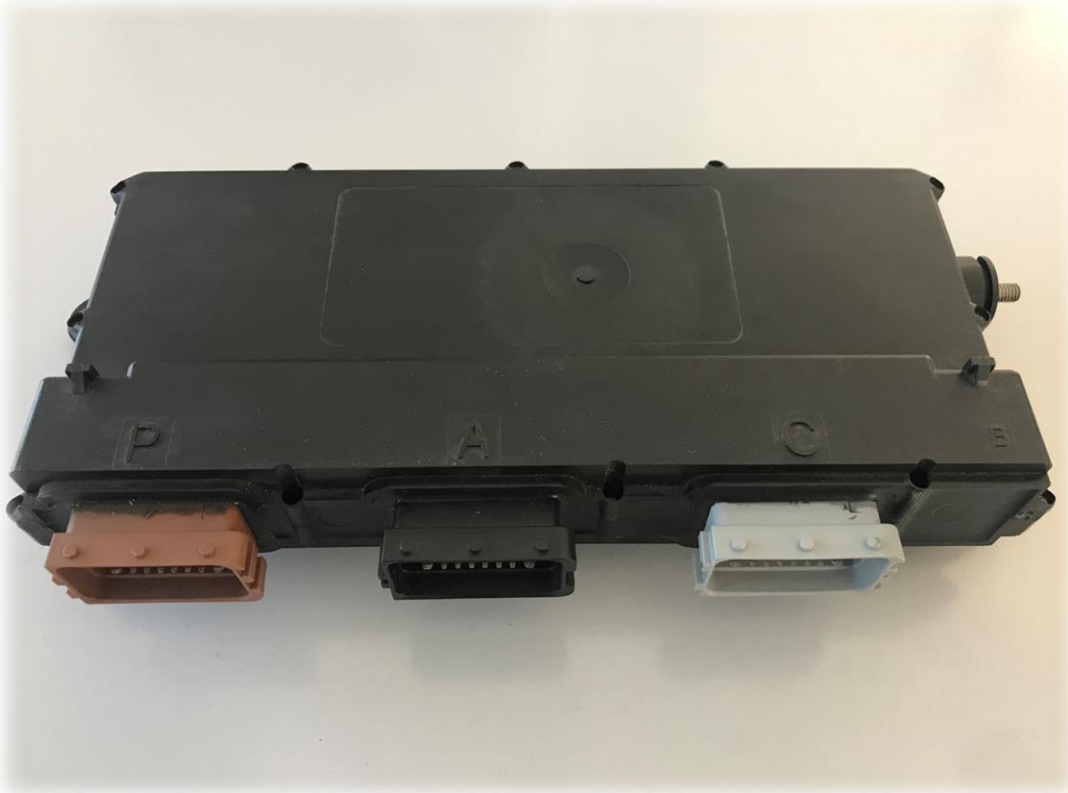
Brushless motor assemblies



- **Targets:**
 - **Insulation test**
 - **BEMF test at constant rpm**
- **End market: AUTOMOTIVE**



Automotive ECU



- **Target: full functional test via CAN**
- **End market: CONSTRUCTION EQUIPMENTS**



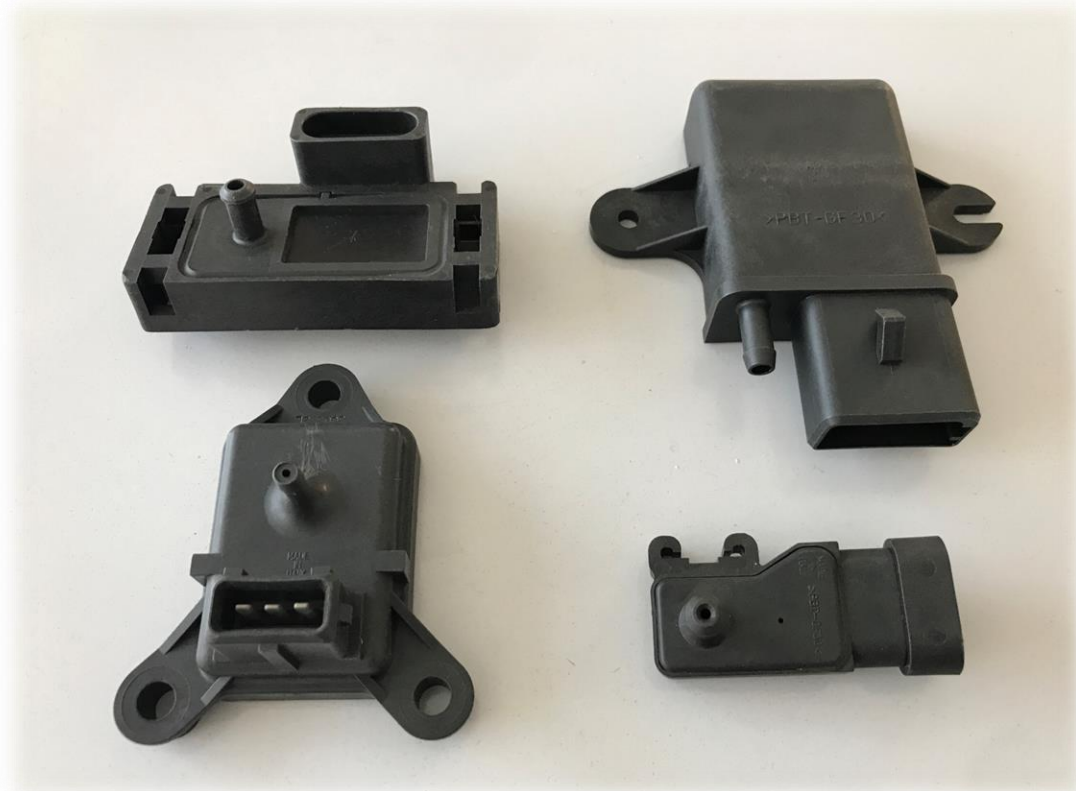
Driver's bed display



- **Targets:**
 - Full functional test via CAN
 - LCD display test
- **End market: TRACTORS**



MAP and DPF/FAP sensors

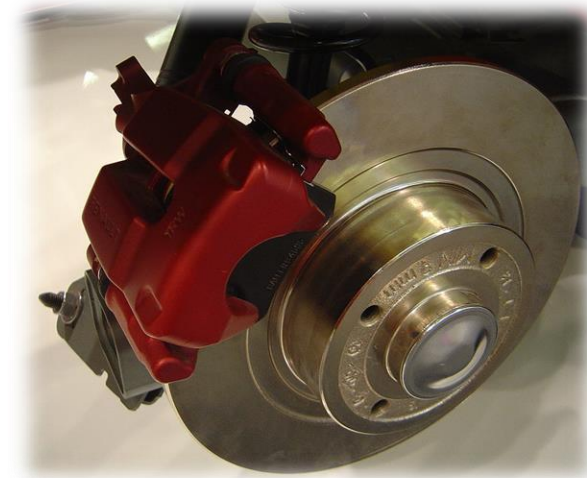


- **Targets:**
 - Custom calibration
 - Functional test
- **End market: ENGINES**



Electric parking brakes

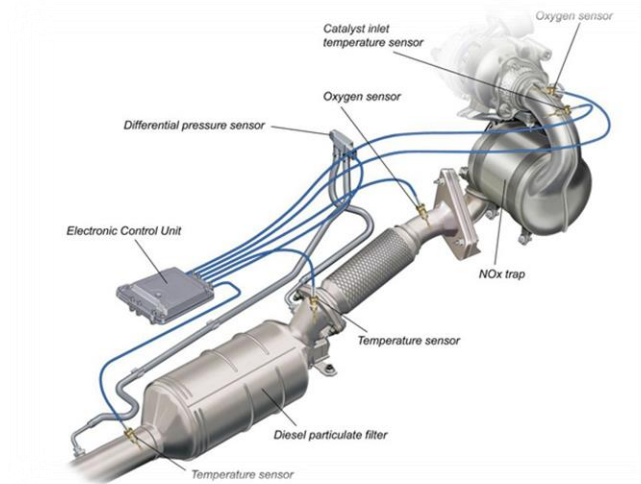
- **Target: functional and performance tests**
- **End market: AUTOMOTIVE**



Lambda sensors



- **Targets:**
 - **Calibration with Laser trimming**
 - **Functional test**
 - **Laser marking on inox housing**
- **End market: AUTOMOTIVE**



EGR valves

- **Targets:**
 - **Position sensor calibration**
 - **Functional test**
- **End market: ENGINES**



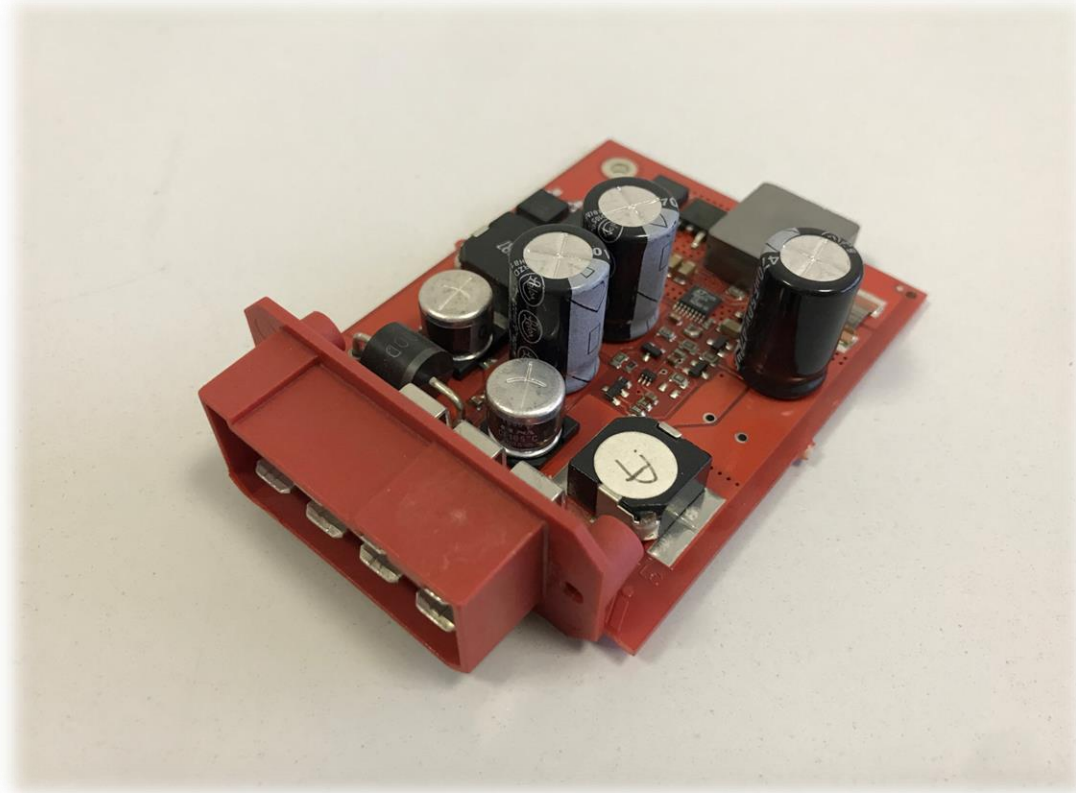
Interior front dome light



- Target: full functional test
- End market: **AUTOMOTIVE**



24 V to 12 V DC-DC converter



- **Target: full functional and performances test**
- **End market: TRACTORS**



Interior control panels

- Target: functional test
- End market: **AUTOMOTIVE**



Dashboard controls



- **Targets:**
 - Estetic check
 - Functional test
- **End market: AUTOMOTIVE**



ABS sensors

- **Target: functional test**
- **End market: AUTOMOTIVE**



Electronic and potentiometric joysticks

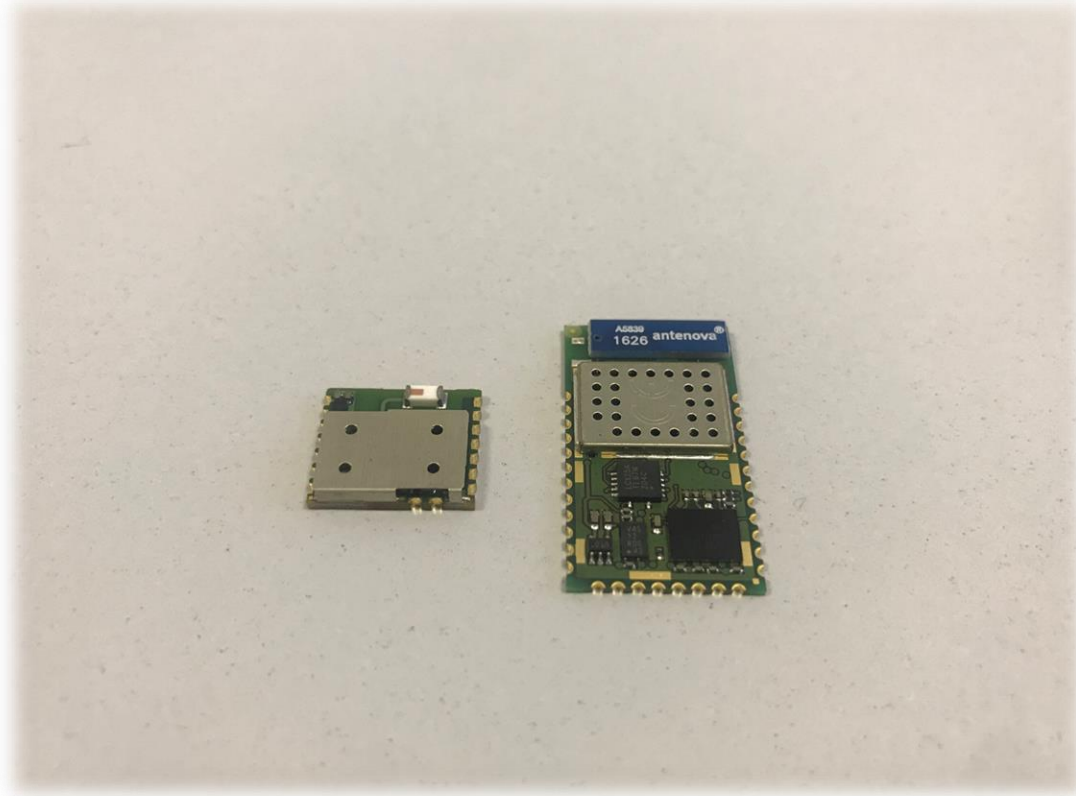


- **Targets:**
 - **Calibration**
 - **Functional test**
- **End market: FORKLIFTS**

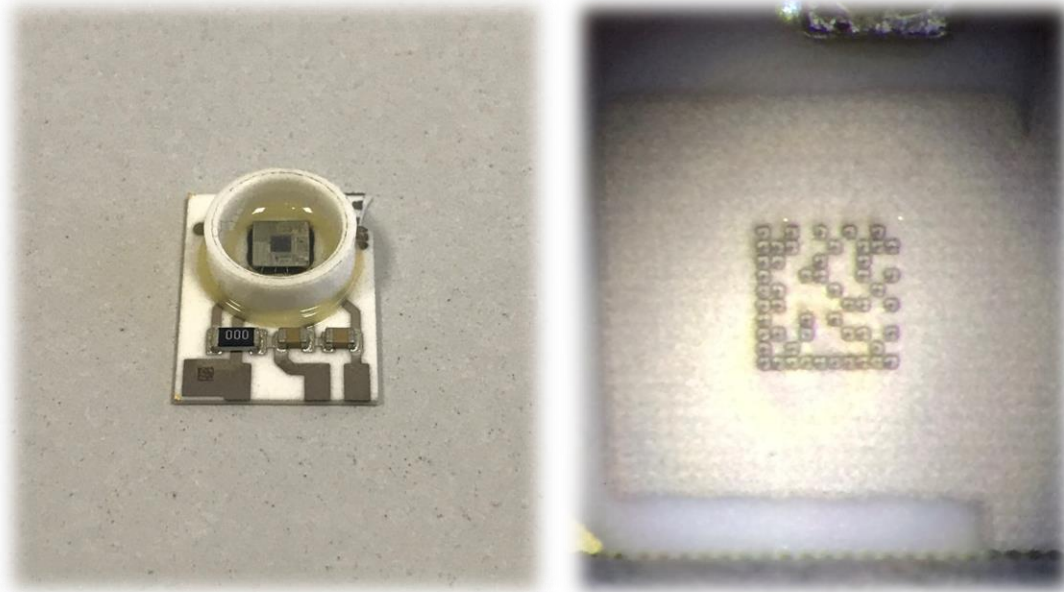


Bluetooth modules

- **Target: In circuit test**
- **End market: Internet Of Things (IoT)**



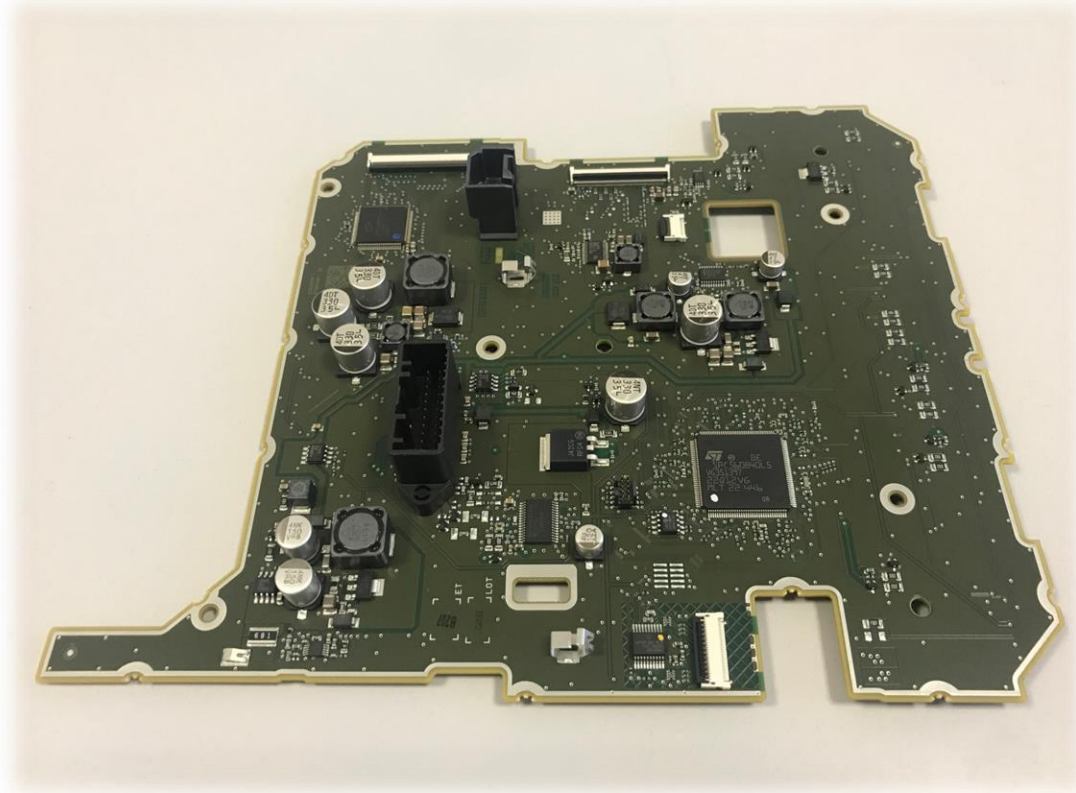
Absolute, relative or differential pressure sensors



- **Targets:**
 - **Calibration and functional test**
 - **Datamatrix laser marking (1x1 mm, 10 x10 dots, 100 μ m dots)**
- **End market: AUTOMOTIVE**



Automotive electronic PCBs



- **Targets:**
 - In-circuit μ P flashing
 - Functional test
- **End market: AUTOMOTIVE**



Urea (AdBlue®) sender units



- **Targets:**
 - **General leak test**
 - **Heater pipe leak test**
 - **Functional test**
- **End market: INDUSTRIAL VEHICLES**



Electric windows motors



- **Targets:**
 - **Electronic board programming**
 - **Functional test**
 - **Vibration test**
- **End market: AUTOMOTIVE**

